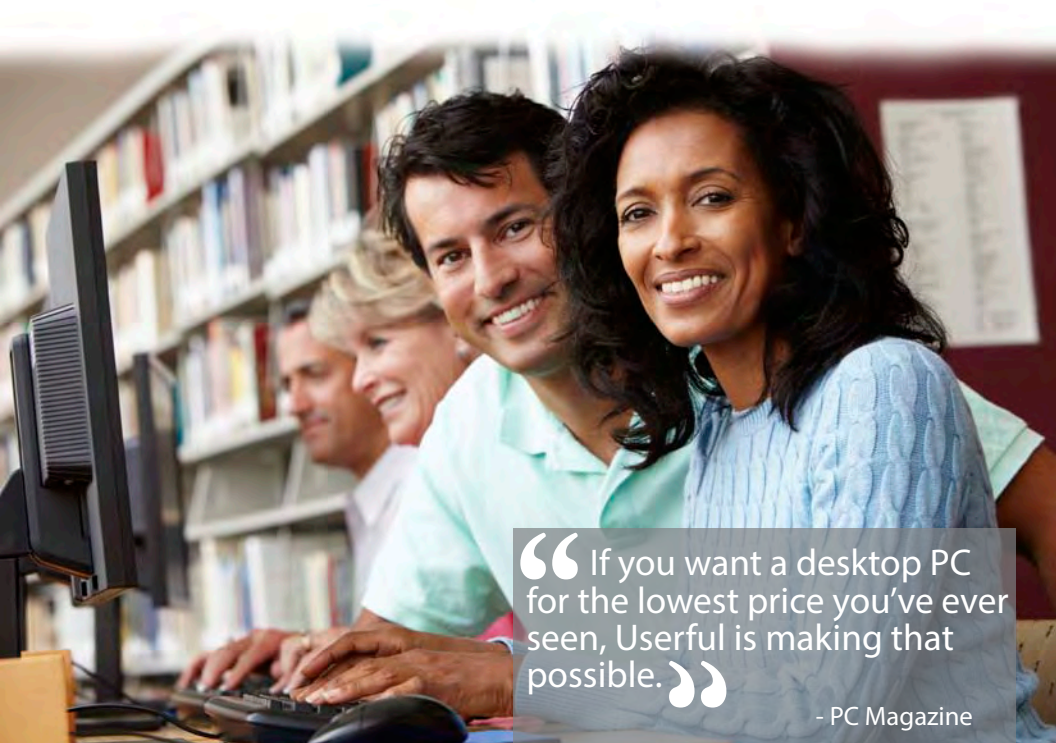




Userful Desktop Public Computing Solutions

For libraries that need public computing solutions for less

For over a decade, Userful has helped libraries reduce the cost of deploying and managing public computers while delivering exceptional performance for patrons. Userful Desktop is a software as a service desktop computer solution that is turnkey and ready to go out of the box. Userful Desktop is locked-down and includes a full suite of integrated public computing features. Supported through the cloud by Userful, it saves time for local IT staff so you can focus on managing your library, not your computers.



“If you want a desktop PC for the lowest price you’ve ever seen, Userful is making that possible.”

- PC Magazine

Save Time, Money. Simplify Management

With Useful Desktop, you can deploy more public computers for less than the cost of any other solution available. It provides you with a reliable computing experience for your patrons and simplified administration tools for your staff.

Save Time

Userful Desktop is turnkey and IT management free. A single install DVD includes a full office software suite for patrons, complete with 40+ applications in 30+ languages, all pre-integrated and locked down. You can also add-on Microsoft™ Office. Local IT staff can simply set and forget the desktops since all updates and upgrades are completed by Useful through the cloud. Library staff with even limited IT training can easily administer updates like customizing the look, feel and functionality of all desktops

Save Money

Userful Desktop includes an award winning desktop virtualization platform that replaces physical PCs with network connected client devices. This saves up to 70% of hardware costs while delivering exceptional performance at every desktop. Patrons can even play different high definition videos at each station without any visible delay. No longer do you need one computer per patron to meet computing needs of your library.

Simplify Management

Desktop lockdown ensures that only staff can add or remove software and make permanent changes to the desktops so every patron consistently receives the same computing experience. Built in privacy protection ensures all personal information is removed when patrons log out. Useful Desktop automatically stays up to date with the latest features without needing your staff time and attention and is guaranteed to be protected against viruses, adware, spyware and malware. Useful Desktop is fully integrated and supported by Useful with only one email or phone number to call for training and support.

“ Useful considered all the things that computers are subjected to at public libraries. There are a lot of products out there that say that they were designed with libraries in mind, but it is the only one that truly makes me believe it was. ”

- Kristen Shoemaker, Systems Librarian
Malden Public Library, Malden, Massachusetts, United States

Empower Patrons and Staff with Add-ons

A full suite of self-service add-ons empower patrons and staff to get the most out of the public computers

- Time and print management with print cost recovery
- Remote control for staff to monitor and control desktops on the network
- Large print to increase readability for users with reduced vision, like seniors
- Wireless web printing option
- PC booking and reservation
- Charge per user option to recover costs
- Internet filtering
- Kids desktops with specialized education games and age-appropriate content
- Patron authentication through ILS integration, including verifying age restrictions or fine status
- Locked down Catalog only and Database access stations





Learn how Userful can help you

Userful is the trusted provider of public computing solutions in more than 100 countries with 1,000,000 desktops sold. Tell us about your goals for your public computer program. We will work with you to create a customized solution that suits the specific needs of your library.

Sign up for a 30 minute webinar to learn more and receive **free** time and print management

Contact Stephanie

1.800.429.7590

ssalmond@userful.com

“ It enabled us to finally deploy enough stations to satisfy demand. It is truly a cost effective way to deploy public computers. We highly recommend the stations to any library that would like to improve their public computer program while reducing the time staff spend managing the machines. ”

- Beverly McFarland, Director
Belen Public Library, Belen, New Mexico, United States

library.userful.com